

IT'S YOUR AREA WHAT'S IMPORTANT?

CAERGYBI AND YNYS CYBI AREA



The Well-being of Future Generations (Wales) Act came into force on 1 April 2016. The aim of the Act is to improve the social, economic, environmental and cultural well-being of Wales.

The Act has established a Public Services Board (the Board) for every local authority area in order to ensure that public bodies work together to create a better future for the people of Wales.

For Gwynedd and Anglesey, the two Boards have come together to collaborate, and it is a partnership that includes the county councils, the fire and rescue service, the health service, Natural Resources Wales and other partners from the public and third sector.

The Gwynedd and Anglesey Public Services Board has divided the whole area into 14 smaller areas. Research has been undertaken on behalf of the Board on each of the 14 areas in order to understand and learn more about the well-being of those areas. In addition to the available data, we also want to know what you think about your area and your community. Partners of the Public Services Board have engaged extensively with our communities in recent months and we have taken the outcomes of those sessions into consideration along with the main messages that were conveyed about the state of well-being of our communities.

It is also important to note that the research has highlighted some data gaps and that some figures are based on 2011 Census data, which is now over 10 years old. Our intention is to regularly update the data contained in this booklet in order to capture the key messages that have been conveyed about the wellbeing of the county, and thus led to the formulation of a Well-being Plan, which will guide the Board's work over the coming years.

This work builds on the Well-being Assessment that was carried out in 2016 by the Public Services Board. This assessment led to the formulation of a Well-being Plan, which has led the work of the Board thus far. Since the previous assessment, our communities have faced substantial changes in light of Brexit and more recently the Covid-19 pandemic. Dealing with the crisis has highlighted the importance of services provided by the voluntary and public sector to our communities, and the importance of the joint-working between them. Also, the crisis has highlighted issues that already existed in our communities, for example, poverty and employment, mental health, second homes and loneliness.

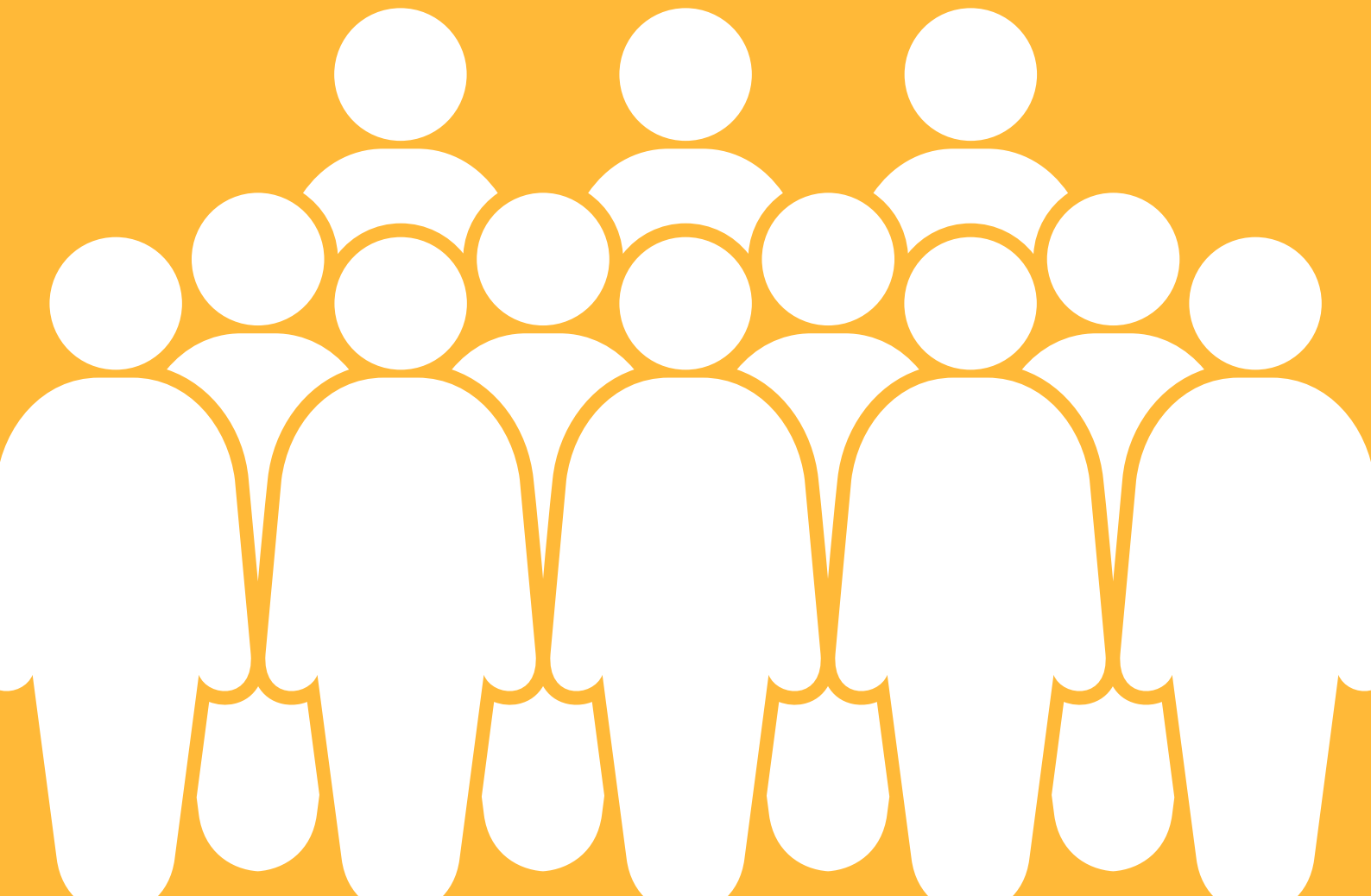
The period has also highlighted the importance of our environment which is central to the health and well-being of our residents and our local economy, attracting visitors to the area. As we look towards a greener path out of the Covid-19 pandemic, it is an opportunity for us to revisit how we use our natural assets to tackle the threats of the climate and nature crises.

The Well-being Assessment will further address those matters that were brought to our attention during the pandemic.

THIS IS THE INFORMATION WE HAVE GATHERED ABOUT THE CAERGYBI AND YNYS CYBI AREA SO FAR. DO YOU RECOGNISE THE PICTURE THAT'S BEEN CREATED OF YOUR AREA?



POPULATION



Who are the people of Caergybi and Ynys Cybi?

14,133 people live in Caergybi and Ynys Cybi - this is about 20% of the total population of Anglesey.

Compared to the rest of Anglesey, there are more children and young people up to 34 years old in the Caergybi and Ynys Cybi area, and fewer people aged over 50.

The population of Caergybi and Ynys Cybi is expected to increase by 15%, to 16,220 by 2043. This is different to the change that is projected for Anglesey where the population is expected to remain quite consistent with a reduction of 0.7% between 2019 and 2043.



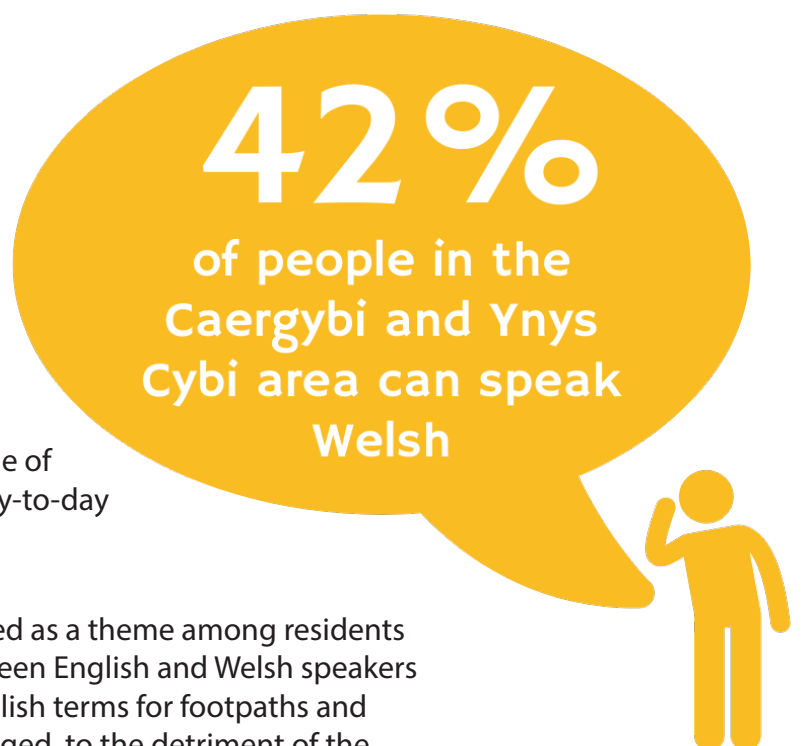
In Caergybi and Ynys Cybi we expect to see an increase in every age group, and the largest increase of 43% in the population aged 75 and over. This increase in the 75 and over population is similar to what is expected across Anglesey, but every age group under 65 years old is expected to decrease across Anglesey where these groups are expected to increase in Caergybi and Ynys Cybi.

Language

According to the 2011 Census, **42% of Caergybi and Ynys Cybi residents can speak Welsh** - this is the lowest percentage for all areas in Anglesey. The numbers have fallen from 52% in 1981. A reduction was seen across Anglesey where 57% could speak Welsh in 2011 and 62% in 1981.

The latest figures note that 50% of the people of Anglesey use the Welsh language in their day-to-day lives, compared with 10% in Wales.

Concern about the Welsh language was raised as a theme among residents and some felt that there was a division between English and Welsh speakers in the area. One indicator was the use of English terms for footpaths and routes and also names of houses being changed, to the detriment of the area's history and culture. (Place Planning Survey)



ENVIRONMENTAL



How green is the area?

Between 2014/15 and 2020/21, the percentage of urban waste sent to be reused, recycled or composted in Anglesey rose from 59.5% to 63%.

This is slightly lower than the increase from 60.2% to 65.1% seen in Wales as a whole for the same period.

The cases of fly-tipping recorded for every 1,000 of the population is higher in Anglesey than Wales, with 18.6 recorded in Anglesey and 10.6 in Wales in 2019/20.



How clean are our streets?

Street hygiene is inspected every year by Keep Wales Tidy.

In 2019/20, 65 streets in Anglesey were inspected, and 97% were of a high or acceptable standard of cleanliness, that is, a Grade B or above. This is similar to 2015/16 data where 95% of Anglesey's streets were of the same standard.

Within the Caergybi and Ynys Cybi area 11 streets were inspected, 100% of which received Grade B or higher in 2019/20. This percentage is the same as the percentage awarded Grade B or higher in 2015/16.

100%

of Caergybi and Ynys
Cybi streets reach a
high or acceptable
standard of
cleanliness



The natural environment

Sea and moorland

The complex marine conditions around Ynys Cybi give way to a variety of habitats, including bedrocks, which are home to lobster and crab populations, which are of commercial importance.

The relative shelter of Rhoscolyn Bay supports a subtidal seagrass community, and is home to several species of algae, crustaceans, molluscs, fish, sponges and anemones. Porpoises and dolphins are also often found in the waters.

South Stack is home to internationally important heath and seabirds. Under the care of the RSPB, the rocky western coast of Ynys Cybi is ideally suited to support and protect the Red-billed Chough.

Caergybi is home to an internationally important seabird breeding colony. These saltmarsh strips and seagrass beds have been designated a Site of Special Scientific Interest and these habitats support a wide range of winter migratory birds. There are sparse heathland dune areas and the whole area supports a range of rare plants such as sea lavender, heath and succulents.



Land and marshes

The Anglesey Fens are some of the most important wetlands in Europe, namely Cors Erddreiniog (the largest), Cors Bodeilio and Cors Goch. Together they form part of a Special Area of Conservation and are also attract visitors and people to the area.

Very little of Anglesey is covered by woodlands, only 4.3% of this compared to an average of 14% across Wales.

Anglesey is under relatively high agricultural pressure. Agriculture is the main land use on Anglesey, accounting for approximately 92% of the land area of the island. This is slightly higher than the national average of around 88%.

“It’s tranquil with an abundance of wild flowers, trees, birds and wild animals.”
(Caergybi and Ynys Cybi resident, Anglesey Well-being Survey)

Ecosystem resilience

Wales' wildlife is in decline, with latest findings showing that one in six species in Wales is at risk of extinction. In 2021, the Welsh Government declared a nature crisis and called for targets to be set to halt and reverse the decline in biodiversity.

Challenges facing species include lack of grazing land, dispersed nutrient inputs in the countryside, historic land, and water management. Water quality is under pressure due to impacts such as nutrient enrichment, intensive land management practices, discharges from sewage and waste water sources and historic metal extraction from Mynydd Parys.

Despite this, two species that thrive on Anglesey are the red squirrel and the water vole.

Climate change and flooding

The climate and nature crisis is one of the major challenges facing future generations. Over the past century, temperatures have increased, sea levels have risen, and weather patterns have changed significantly.

In North West Wales and the Isle of Anglesey local authority, there are a number of communities at risk of flooding, as identified by the Register of Communities at Risk (2019).

According to the Flood Risk Assessment for Wales, **on Anglesey there are 2,826 properties at risk of flooding river, sea and surface water.**



2,826

Anglesey homes are at risk of flooding

Fresh air

NO₂ concentration is one way of measuring air quality and is conveyed as average micrograms (µg) per m³. In 2019, there was an average of 5.1 µg/m³ NO₂ in residential dwelling locations in Anglesey. This was much lower than the Wales average measurement of 9.2 µg/m³.



SOCIAL



Good health?



In the Caergybi and Ynys Cybi area in 2020-2021 an ambulance response time for a 'red' call, which is the most serious type, averaged 10 minutes.

This has risen in recent years from 06:22 minutes in 2018-2019 and 07:12 minutes in 2019-2020.



Ambulance response time:

10 minutes

Return public and private travel times to a *GP surgery* is higher in Anglesey than Wales, with an average time of 47 minutes and 8 minutes compared to 40 minutes and 7 minutes.

This is also true for travelling to a *pharmacy* where the average return public travel takes 48 minutes and 10 minutes by private travel compared to 38 minutes and 7 minutes for Wales.

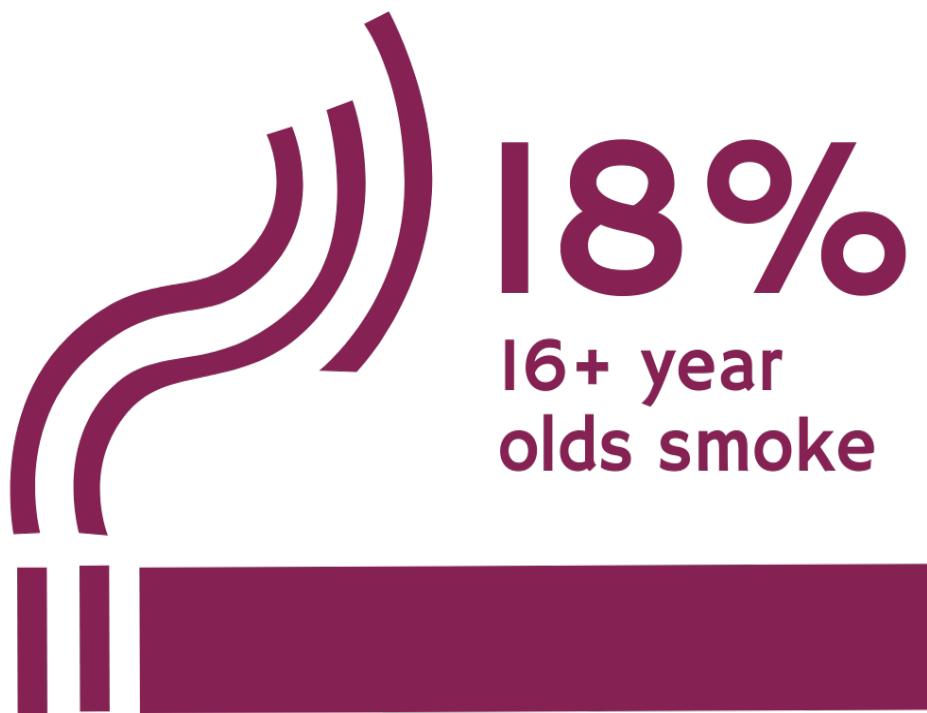
Travel times vary within the Caergybi and Ynys Cybi area, where areas including Trearddur 1 and Trearddur 2 have a much longer average public travel time than the average time for Anglesey, while areas including Holyhead Town and London Road have some of the shortest public travel times to pharmacies and GP surgeries.

Further population health figures are available for Anglesey to provide an indication of the county's health conditions and patterns.

Men's life expectancy at birth in Anglesey is 79.3 years, while **women's life expectancy at birth is 82.9**. This is slightly higher than Wales figures where men's life expectancy at birth is 78.3 years and the figure for women is 82.1 years.



According to 2017/18-2019/20 figures, 37% of adults aged 16-64 have a healthy weight in Anglesey, this is slightly lower than the percentage for Wales, namely 38%. This figure increases to 46% in adults aged 65 and over, which is higher than the Wales percentage of 38%, and it is the highest percentage of all local authorities in Wales.



Other factors affecting our health are smoking and alcohol consumption. **18% of people aged 16 and over in Anglesey state that they smoke**, a very similar percentage to all of Wales where a little over 17% say that they smoke. 14% of Anglesey adults note that they drink more than 14 units of alcohol a week, a figure that is lower than the 19% for all of Wales.

Mental health is an important part of well-being and health. Public Health Wales data from 2018-19 identifies adult mental well-being (16 and over) in the form of age-standardised scores. Anglesey's score is 51.8 which is slightly higher, but comparable, with Wales's score of 51.4.

Data from the National Survey for Wales for 2018/19-2019/20 indicates that 10% of Anglesey adults have mental disorders, the same percentage as the rest of Wales.

Child and adolescent health

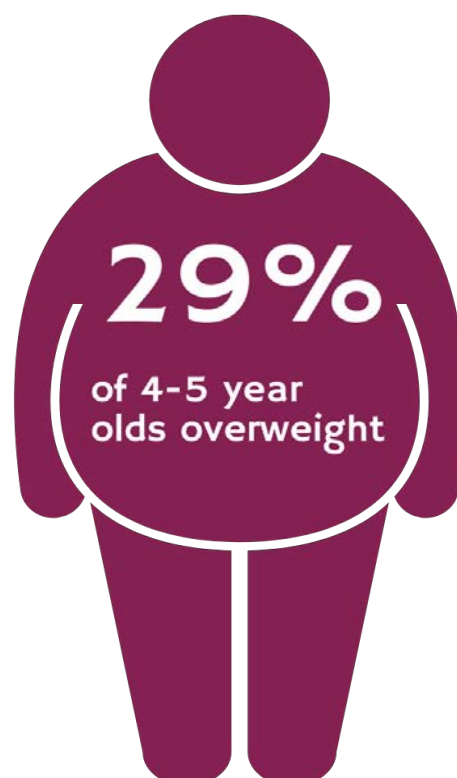
Specific health statistics for Anglesey children are also available.

The percentage of individual live births of a low birth-weight is lower in Anglesey than Wales, namely 4.9% compared to 5.9%. The percentage for Anglesey has remained consistent between 2017 and 2019.

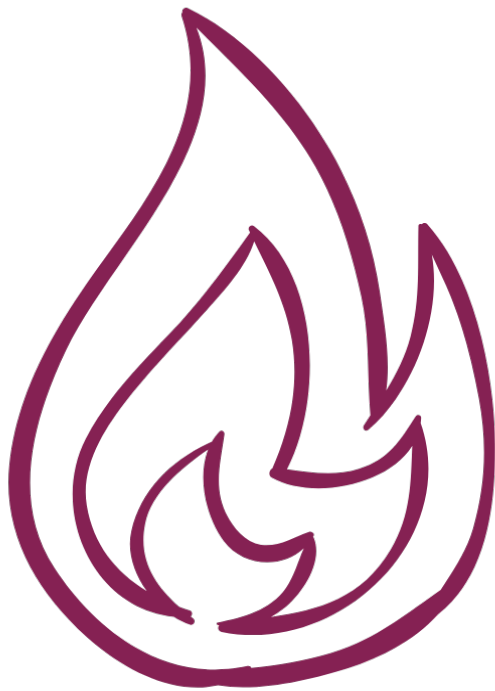
The percentage of children fully immunised as scheduled by the time they are four years old has increased in Anglesey from 90.4% in 2017 to 93.7% in 2019. This percentage has been consistently higher than the percentage for Wales where 88% were immunised in 2019.

Public Health Wales' figures for 2018/19 show that in Anglesey, 29% of 4-5 year old children are overweight or obese - which is higher than the Wales figure of 27%.

According to data from 2017/18, approximately 8% of Anglesey children aged 11-16 consume alcohol and 5% smoke. This compares with 8% and nearly 4% for Wales.



Keeping safe



74 fire incidents in Caergybi and Ynys Cybi

The crime rate per 1,000 people (aged 16 and over) in the Caergybi and Ynys Cybi area has increased since the last well-being assessment, from 148 in 2015 to 176 in 2020. This is the highest crime rate for all of Anglesey's well-being areas.

61% of the people of Anglesey feel very safe in the local area after dark, a figure that is much higher than 46% for Wales.

On average between 2017/18-2019/20 there were **27 fires that were started deliberately a year in the Caergybi and Ynys Cybi area**, which is lower than the number noted in the last well-being assessment. **In the same period there were 47 accidental fires**, which is broadly in line with what was noted in the last well-being assessment.

The annual average deliberate and accidental fire incidents in Anglesey have reduced since the last well-being assessment.

Keeping in touch



68% of homes have a car or van in Caergybi and Ynys Cybi

According to the 2011 Census, **68% of households in the Caergybi and Ynys Cybi area have a car or van** - this is low compared to the rest of Anglesey, where 82% of households have a car or van.

This is in line with concerns expressed about unreliable and inadequate public transport. It has emerged as one of the main themes when seeking the views of residents, with the people of Caergybi and Ynys Cybi noting that this creates a barrier in accessing key facilities such as shops and the GP surgery (Place Planning Survey and Anglesey Well-being Survey).

The average return public travel time to a grocery store is higher in Anglesey than the

whole of Wales, with an average time of 38 minutes compared to 32 minutes. The return travel time is similar for Anglesey and Wales, with an average time of 5 minutes and 4 minutes respectively.

“(There’s) only one bus service in Llaingoch between Llaingoch and Holyhead - used to be a lot more pre-Covid and could go to the shops and leisure centre.”

(Caergybi and Ynys Cybi resident, Anglesey Well-being Survey)

Figures from 2019 show that Anglesey had a higher percentage of broadband unavailability at 30Mb/e than the whole of Wales, namely 10% compared to 7%.

In 2019, nearly 12% of the people of Anglesey were lonely, this has fallen since 2016 where 16% were lonely. This figure is lower than Wales where 15% were lonely in 2019.

Helping each other

According to the Census in 2011, 11% of the population in the Caergybi and Ynys Cybi area provide at least one hour a week of unpaid care. This figure is similar to other areas in Wales and Anglesey.

Pre-pandemic figures show that the percentage of people who volunteer in Anglesey has fallen slightly from 31% in 2016 to 28% in 2019. A similar reduction was witnessed in Wales from 28% in 2016 to 26%, with fewer people volunteering across Wales than Anglesey. Covid-19 probably led to an increase in this figure, however, there is no data by local area available to measure this.

According to the residents of Caergybi and Ynys Cybi, friendship and sense of belonging to the community is one of the main features that makes the area a good place to live. (Anglesey Well-being Survey)

“It is a friendly community and people look out for each other”

(Caergybi and Ynys Cybi resident, Anglesey Well-being Survey)



ECONOMY



Houses and second homes

In 2020, the median house price in the Caergybi and Ynys Cybi area was around **£140,000**, an increase of **£30,000** since the last assessment in 2015. This is the lowest median for Anglesey.



The median income of Caergybi and Ynys Cybi households is around £24,576, but at least £ 26,429 is needed to afford an entry level market price house.

This means that 54% of Caergybi and Ynys Cybi households have been priced out of the market. This is generally lower than the rest of Anglesey at 62% and Wales at 56%.

It's likely, however, that the 2020 figures does not fully illustrate the impact of the pandemic on the area's house prices, and these will be updated as the data becomes available.

Housing and second home issues were highlighted when engaging with residents as part of the Place Planning survey. The comments related to young people and families being unable to afford housing in the area, a lack of rented housing and also concerns about increasing numbers of second homes and Air BnBs in the Caergybi and Ynys Cybi area.

What do the people of Caergybi and Ynys Cybi do?

Figures from the 2011 Census show that 15% of people who are employed in the Caergybi and Ynys Cybi area work in the caring, leisure and other service sector. On the other hand, only 12% work in the skilled trades - lower than the percentage in all other areas of Anglesey.

While 17% of the people in work and with no qualifications are in the processing, plant and machine operation sectors, only 0.5% work in the professional occupations. This is a similar figure to the rest of Anglesey and Wales. Reliable data on areas of work by local well-being area after 2011 is not available, and therefore a significant data gap is evident.



Salary

The median weekly salary for the Anglesey is around £ 506 per week. This amount is 27% higher than Gwynedd (£ 386 a week), and 8% higher than Wales as a whole (£ 469 a week).

In Anglesey women's wages are 6% higher than men's in the area. This is in stark contrast to the situation in Gwynedd, where women's wages are 32% less than men and in Wales where women are paid 31% less.



£ 506 median weekly wage

Unemployment

80% of Anglesey residents aged 16 to 64 are in work or education, which is higher than Wales' 76%.

On average, **the percentage of people aged 16-64 claiming Jobseeker's Allowance in the Caergybi and Ynys Cybi area between November 2020 and October 2021 was 8.3%**, higher than Anglesey for the same period (5.3%).

The figure was highest in November 2020 (9%) and lowest at October 2021 (7.1%), suggesting that the Covid-19 lockdown period has had an effect on the figures.



“We need more jobs that are not seasonal or jobs that offer the same hours of work each week.”
(Caergybi and Ynys Cybi resident, Anglesey Well-being Survey)

Businesses

In 2020, a total of 2,155 businesses were registered in Anglesey. The rate of new business start-ups in Anglesey is higher than Gwynedd, but less than North Wales and Wales.

59% of companies in Anglesey stay in business for at least three years or more. This is higher than Wales at 54%.

Anglesey also has a lower rate of business failures compared to North Wales and Wales.

Skills for life

From 2018/19 the Welsh Government has introduced a new set of performance measures which include literacy, numeracy and science points score. This makes it difficult to make year-on-year comparisons over recent years and there is no breakdown by county since 2018/19.

However, figures are available for the number of year 11 school leavers known not to be in education, employment or training (NEET). In Anglesey the percentage for 2020 is 4.7%, which is significantly higher than the 2018 percentage of 1.1%. The percentage is also higher than the Wales figure for 2020, namely 1.7%.



The money in your pocket

Income available to spend after the costs of paying for a home and taxes from people in Anglesey is £17,529 per person per year, which is £ 266 more than Wales as a whole.

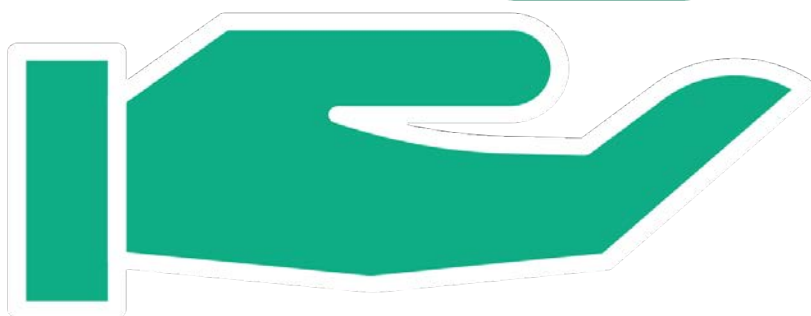
In the Caergybi and Ynys Cybi area, 25% of primary school pupils claim free school meals, the highest percentage of all of Anglesey's well-being areas.

This is also the case with the number of secondary school pupils, with 23% claiming free school meals, which is also higher than the 16% for Anglesey.

According to pre-pandemic figures, nearly 23% of households in the Caergybi and Ynys Cybi area are in fuel poverty, this is the highest in Anglesey where the average is 18%. Of all the homes in the area, 5% have no central heating, similar to the rest of Anglesey but higher than Wales which has 2%

£17,529

income available to spend after home and tax costs



However, with the recent fuel price increase this figure is likely to be much higher than estimated in 2018, but unfortunately sourcing reliable data in this field was problematic.

CULTURAL



Keeping fit

According to the latest School Sport Survey by Sport Wales, more of Anglesey's children participate in sports three or more times per week compared to Wales.

In 2018, nearly 56% of Anglesey's pupils participated in sports activities at least three times a week, compared with 48% in Wales.



56%

of children participating in sports 3+ times a week

By now, the picture is similar for adults in Anglesey. In 2016, 28% of people participated in sports activities at least three times a week in Anglesey and 29% across Wales, by 2019 the number for Anglesey increased to 34% compared to 32% across Wales.

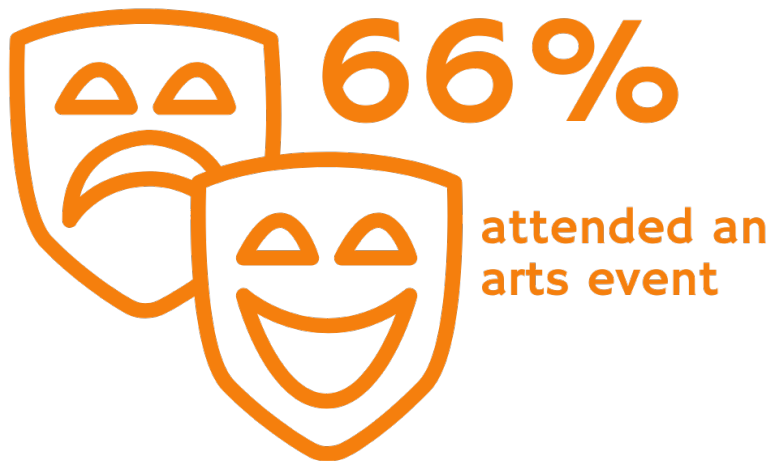
Return public and private travel times to a sports facility is higher in Anglesey than Wales, with an average time of 70 minutes and 13 minutes compared to 55 minutes and 10 minutes respectively. Again, the figure varies within the area, where Holyhead Town, Porthyfelin 1 and Porthyfelin 2 have some of the shortest public travel times on the island and Trearddur 1 and Trearddur 2 have travel times that are higher than the figure noted for Anglesey. There is variation also when looking at private travel, where the average times for Kingsland, Porthyfelin 1 and Porthyfelin 2 are some of the shortest on the island, and the travel times in Trearddur 1 are longer than that of Anglesey.

Leisure time

The average return public and private travel times to a public library is higher in Anglesey than the whole of Wales, with an average time of 53 minutes and 13 minutes compared to 45 minutes and 10 minutes.



The figure varies within the Caergybi and Ynys Cybi area, where Holyhead Town, London Road, Porthyfelin 1 and Porthyfelin 2 have some of the shortest public travel times on the island and Trearddur 1 and Trearddur 2 have travel times that are higher than the figure noted for Anglesey. The average private travel times for Porthyfelin 1 and Porthyfelin 2 are also some of the shortest on the island.



Leisure time figures are available for the run up to the pandemic. **66% of adults in Anglesey attended an arts event during 2019-20.** This is similar to Gwynedd and slightly lower than the rest of Wales.

In 2016-17, 68% of Anglesey adults stated that they had visited historic locations over the last year. This figure is higher than the figures for Gwynedd and Wales where 47% and 58% respectively stated that they had visited historic locations.

The effect of the pandemic on arts and culture is apparent, with theatre and cinemas having to close over the lockdown period and subsequent restrictions on attendance. However reliable figures to measure this effect per local area was not available.

Green spaces

There is a link between cultural well-being and spending time in green spaces and nature, and proximity to a natural green space is one form of assessing an area's physical environment.

Although the score for proximity to an Accessible Natural Green Space is lower than that of Anglesey and Wales, namely 65% compared with 77%, some areas in Caergybi and Ynys Cybi have the best scores for the island including 97% for London Road and Morawelon and 95% for Porthyfelin 1 and Porthyfelin 2.

“(The) ability to walk from the doorstep up the mountain or the Breakwater park and rocky coast. This is very important to me.”
(Caergybi and Ynys Cybi resident, Anglesey Well-being Survey)



FOR MORE INFORMATION...

www.LlesiantGwyneddaMon.org

post@llesiantgwyneddamon.org

01766 771000

Ask for the Programme Manager – Gwynedd and Anglesey Public Services Board